

# MAJESTIC STEP

The industry's most innovative step

NEW 2008

MAJESTIC STEP is industry's largest & strongest drop in step for above ground pools, ideal for gathering, relaxing & tanning.

**InnovaPlas**  
The pool Step Company

# The industry's most innovative step

# MAJESTIC STEP

8000-C-S

Model 8000 with PVC handrail.

Also available with exterior ladder including locking system for pivoting ladder.

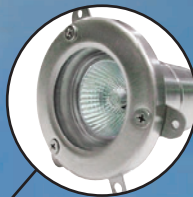


8005-C-S & 1022 Ladder

Available as model 8005 with rotomolded handrail.

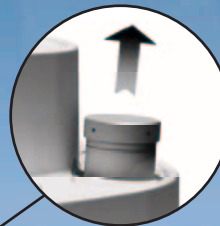
## MoodLight Option #9030

Halogen light, MR16 50w.  
Stainless Steel casing and ultra resistant glass.  
CSA certified light.



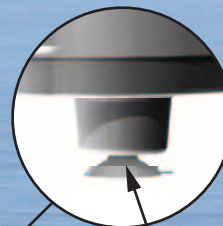
## 1- FRONT LOADING COUNTERWEIGHT SYSTEM tm

This simple, removable, counterweight offsets floatation. Step Cups provide stability keeping the product in place in the pool. This system will also help prevent liner stress, print or abrasion. Easy removable counterweight system for winterizing.



## 2- ALGAE CONTROL BOOSTER SYSTEM tm

The step's mounting pads lift bottom of step away from the liner to allow true, complete water flow. The most effective system to avoid potential algae formation for drop in steps!



## 3-STEP CUP SYSTEM

Combined with the counterweight system the Step Cups will PROTECT YOUR LINER while keeping the step in position at the bottom of your pool by a suction concept. Its unique soft material allows the ultimate in liner protection.



43,5"

58"

44"



4275, Ch. Rhéaume, Sherbrooke, Québec, Canada, J1R 0A2  
[www.innovaplas.com](http://www.innovaplas.com)

PLEASE NOTE: INSTALL STEP ON FLAT SURFACE.

Majestic Step is ergonomically designed to withhold weight up to 500 lbs.  
InnovaPlas reserves the right to modify its products' specifications, designs or models at any time, without further obligation on its part.

Member of:  APSP The Association of Pool & Spa Professionals

FITS 48", 52" AND 54" POOLS.

**THE INDUSTRY'S ONLY PATENTED  
STACKABLE & FRONT LOADING  
BALLAST SYSTEM FOR DROP IN POOL  
STEPS. ( U.S. PATENT # 6,966,405 )**